



GUIDING LIGHT ACADEMY

School Safety Guidelines for Academic year 2020-2021

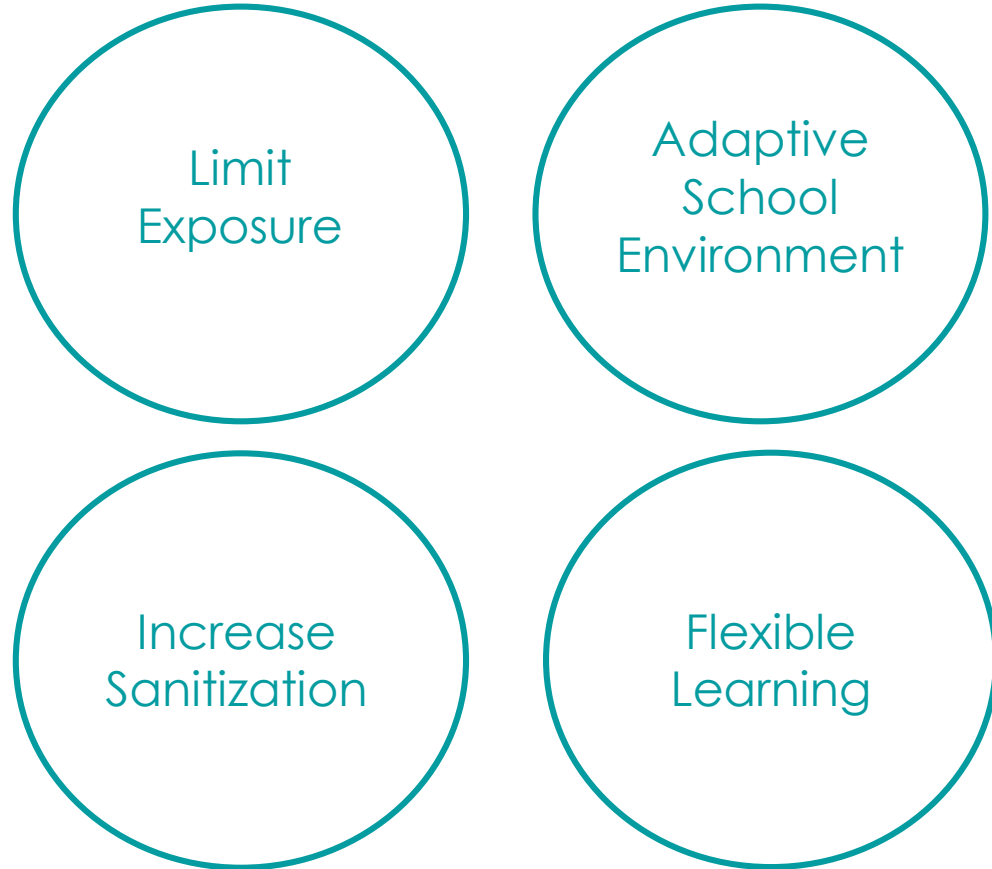
Summary

The main objective of this document is to highlight the steps involved in Guiding Light Academy's back to school safety plan. We have leveraged the available guidance from the Ministry of Education and "Ontario's Guide to Reopening Schools." Guiding Light Academy has also added additional enhancements based on recommendations from Health and Safety advisors and medical professionals

- Student mental health and wellbeing is a key focus, while in the classroom or online, our staff's main goal is to ensure students can regain some sense of normalcy and routine to their daily lives.
- New pick up and drop off process with strict screening and daily attestation forms and temperature checks
- Protection of the teachers – safety of our school staff is paramount. PPE use is mandated on the premises
- Limited access to the school and limited points of exposure – once children are dropped off at school, they will remain in their class cohort for the rest of the day.
- Individuals (teachers, administration and students) exhibiting symptoms are denied access to the premises until a doctors note or negative COVID test can be provided
- New school furniture and classroom rearrangement to ensure as much space as possible between students
- Management of suspected and confirmed COVID-19 cases and their contacts
- In case of confirmed COVID-19 cases, GLA will comply with the recommendation of Peel Public Health and the ministry of education
- It is recommended that if your child has any pre-existing condition that he or she should attend the online GLA E learning program
- Staff has undergone training by healthcare and health and safety professionals

The 4 Key Pillars of our Back to School Safety Plan

Our mission is to facilitate a safe return to school with these four risk mitigation pillars in place



Outdoor Pick up and Drop off: Guiding Light is limiting parent access to the school and conducting screening to prevent symptomatic individuals from entering the premises

Cohort Classrooms: Students will only interact with their classroom teacher and other student in their grade during school hours. All playground access and activities will occur at the cohort level and PPE is mandated for all educators on the premises and students from grade 3 - 8

Increased Handwashing and Sanitization: Students will be instructed to wash or sanitize their hands on entering the premises and regular handwashing before food consumption and after playground activities will also become a requirement

Hybrid Learning Model: Offering online and in school options allows GLA to mitigate exposure for students at a higher risk of severe disease. Parents have autonomy to select the option that meets their needs. All classes will be live streamed which ensures students can keep up to date with the curriculum should they be required to stay home for any reason.

Hybrid Learning Program

- For the Academic year 2020-2021, GLA will be offering both all day in class learning and E learning
- All classes will be livestreamed over Zoom to students at home who are enrolled in the E Learning program
- All students have the flexibility to switch between the in class learning and the E learning program
- If a student is feeling unwell, he or she is encouraged to stay home and take part in the E learning program
- Daily Schedules will be posted to Google Classroom and will contain the Zoom links for each class

In school

1

Teacher led learning



2

Guiding light curriculum goals



3

Full Day Program



4

You choose the best option for your family



Online

1

Teacher led learning



2

Guiding Light Curriculum goals



3

Full Day Program



4

You choose the best option for your family



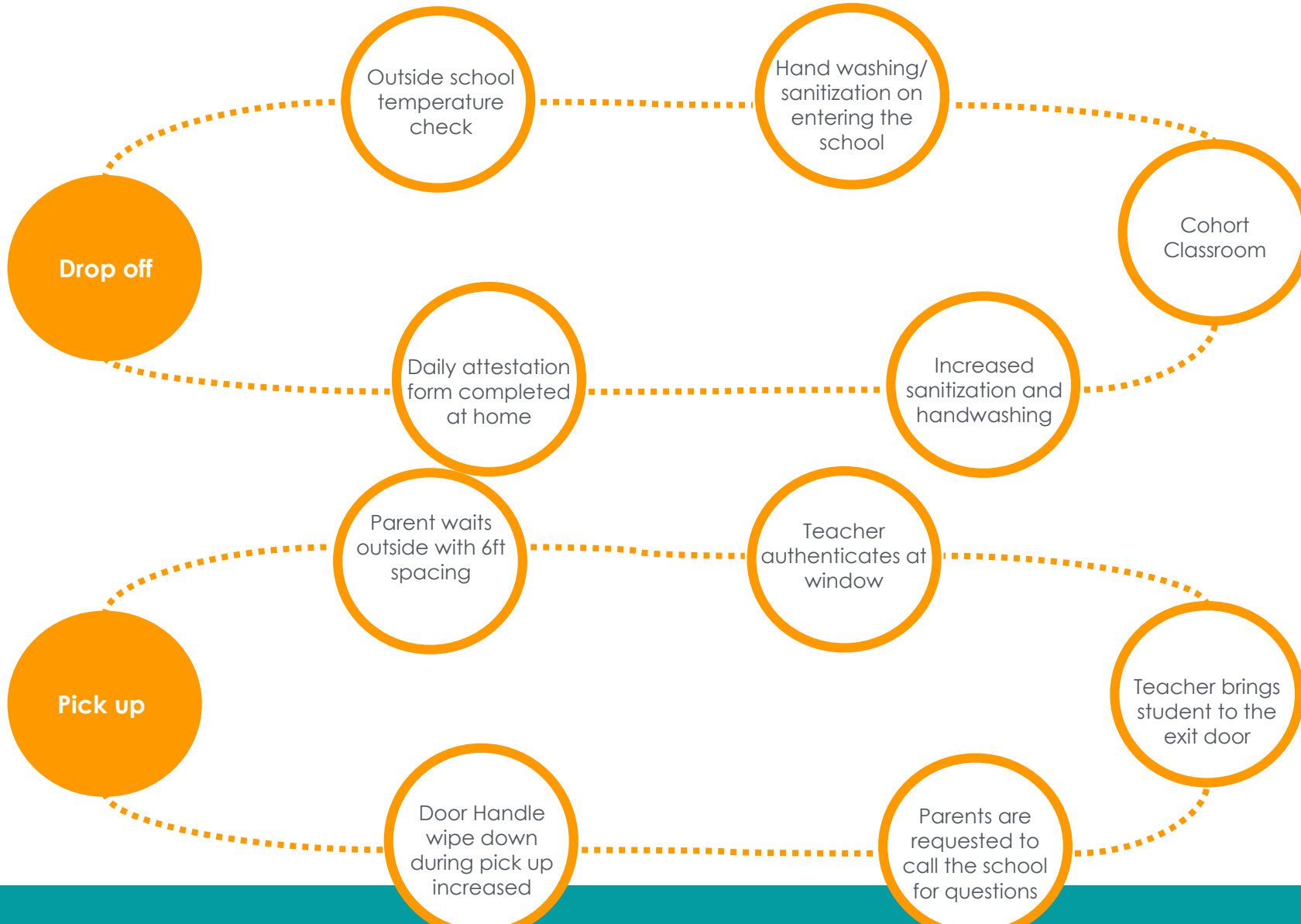
Exc .
expectations as in-school

Morning Screening

- Parents are responsible for their child, being in good health before they are dropped off at school.
- Parents are expected to complete and sign a health attestation form every day which is to be submitted to the school before the child enters school confirming that the child or anyone in the household has not experienced any COVID-19 symptoms in the past 24 hours.
- A pack of printed health attestation forms will be given to all the parents
- Each child will be temperature screened every morning before entering the school building
- If the child's temperature is equal to or over 38°C or 100.8°F the child should be taken back home immediately
- Parents are requested to park their cars in the Free Green P opposite the school and walk your child to the school building to avoid crowding
- Please line up 6 feet apart which is indicated by the distancing signage on the ground. Please wait till your child has been screened and taken into the school
- As part of the safety protocol, parents will not be permitted to enter the school building
- Children should use the hand sanitizers at the entrance and go directly to their class room and wash their hands
- During the afternoon pickups, parents are requested to line up 6 feet apart outside the school and a teacher will accompany your child out of the school and hand over the child to the parent at the exit door

Pick up and Drop off Process

This new process is essential to keeping our school open safely. Screening ensures exposure to COVID is limited by preventing symptomatic individuals



Outdoor Drop Off

- We strongly ask that parents and caregivers play an active role in the daily screening of children prior to leaving for school
- It is recommended that parents wear a mask during dropoff
- Enhanced screening will cause drop off lines but parents are asked to remain in cars until lines have reduced and maintain a 6 ft distance while in the line
- Temperature will need to be below 38.5 with a no contact forehead temperature scanner to be allowed entry

Low contact Pick up

- Please note that before and after school care options while available will occur with a larger cohort of students. Parents are advised to pick up students during school hours if they want to limit their child's exposure to only their classroom cohort
- It is recommended that parents wear a mask during pick up

Increased Sanitization

Guiding Light Academy has a dedicated Janitor on the premises which allows for frequent and highly effective sanitization efforts. To reduce the risk of surface transmission

- All products used on the premises are Health Canada approved to ensure the safety of our students and staff
- High touch point areas will be wiped down with disinfectant products after drop off, twice during the school day and after pick up
- Classroom Sanitization and ventilation during lunch break and recess. Ventilation allows for improved airflow which can influence the transmissibility of COVID-19.
- Open windows whenever possible weather permitting in combination air flow ventilation systems
- Toys including playground toys (basketballs etc.) will be allocated separately to each classroom cohort to limit opportunities for transmission
- Daily enhanced deep clean of the school premises with disinfectants – wipes for high touchpoint areas, spray for mass surface area coverage and daily vacuum and floor disinfection
- High touch points areas include but are not limited to the following – all door handles, all faucets and toilet handles, teachers desk, light switches, stair railings etc.

Cohort

Cohorting refers to the practice of keeping students together in a small group throughout their school day, with limited exposure to multiple teachers or a wide variety of classmates.

- Students from Kindergarten, Grade 1 and 2 will remain with their class teacher and assistant teacher for the entire day.
- Religion and French lessons will be taught via Zoom and projected to their classrooms.
- Grade 3 to 8 will cohort with the students of their classroom
- Religion classes will be taught interactively over zoom and projected to their classrooms

Physical Distancing

- Investments made to ensure maximum physical distancing in the classroom
- Children will maintain physical distancing while they line up for recess, washroom usage and entry and exit
- Physical distancing signage will be placed around the school

PPE

- All Staff will be provided with the appropriate PPE and trained on appropriate hygiene practices
- Students in Grades 3 to 8 will be required to wear non-medical or cloth masks indoors in school, including in hallways and during classes
- Students will be taught in school the appropriate mask wearing strategies and protocols
- Students are to bring 2 or more cloth masks per day to school

Hand Hygiene

- Students will be taught to handwash at regular intervals which include but are not limited to after coughing, sneezing, touching of nose and before and after eating
- Touchless soap dispensers will be placed in all classrooms and washrooms
- Touchless hand sanitizer dispensers will be placed in the classroom, hallways and entrances
- A hand hygiene log will be maintained

Management of suspected COVID-19 cases

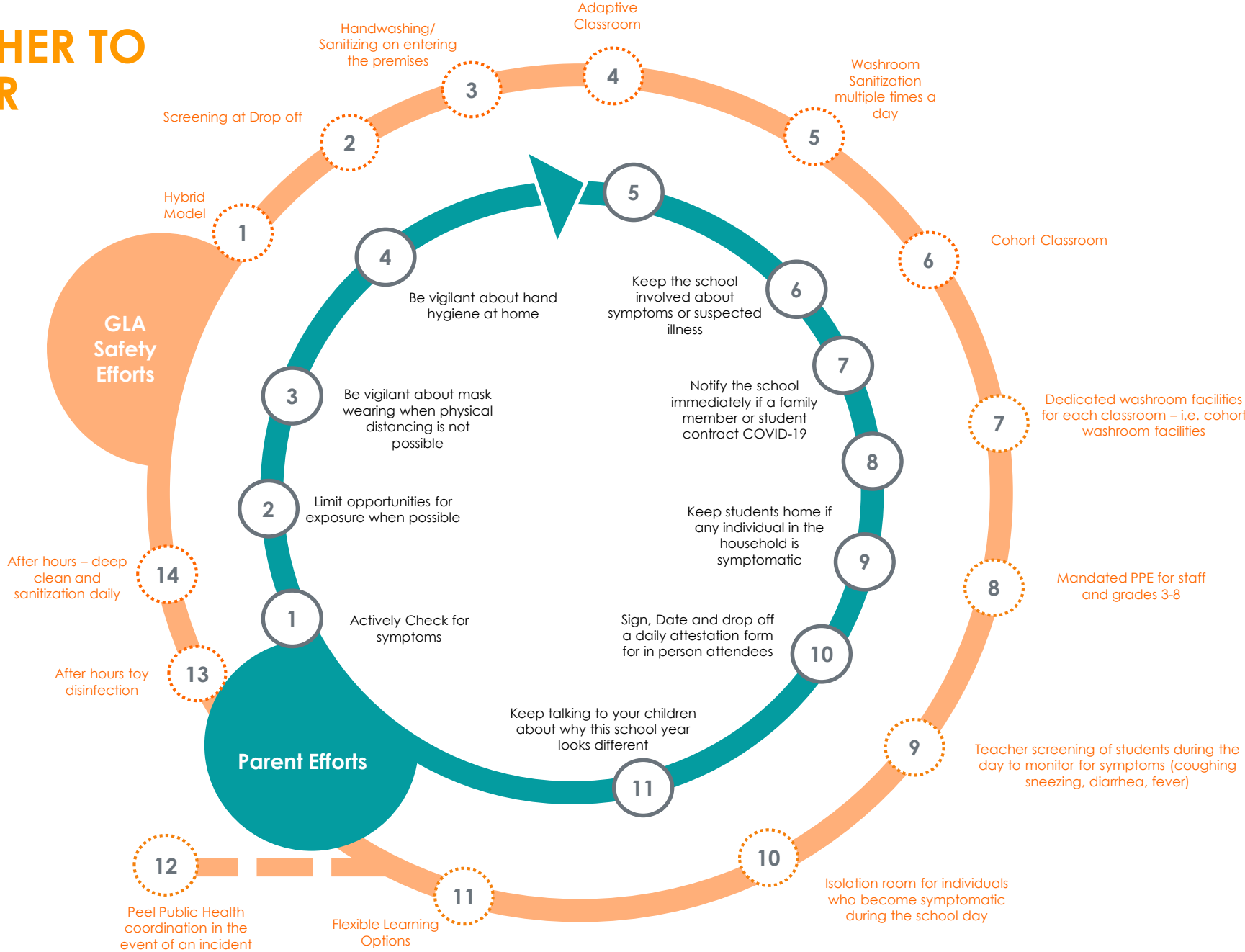
In a situation where symptomatic or asymptomatic infections are identified at the school

- In the event a student exhibits the following symptoms while on the property they will be moved to the isolation room where they will remain until pick up with either the assistant teacher or a supervisor teacher:
 - Coughing –periodic consistent cough and complaints of sore throat
 - Fever
 - Diarrhea
 - Nausea and Vomiting
- Parents are immediately notified and asked to make arrangements for immediate pick up
- Parents will need to remain outside the premises during non routine pick ups and follow the same process as the scheduled daily pick ups. On arrival parents are requested to call the school phone number and advise which student they are picking up. Parents will be required to wait outside until the teacher escorts the student to the exit.
- Parents are asked to limit conversation during the handover – and instead call the Guiding Light phone number for any questions, information or required support.
- Classroom Sanitization during the next lunch break and wipe down of the high touchpoint areas in the classroom
- Negative COVID test or Doctors note (advising that symptoms are not an indication of COVID) will be required for student to resume in-school attendance

COVID-19 Symptoms

- COVID-19 Symptoms to look out for:
- New or worsening cough
- Shortness of breath or difficulty breathing
- Temperature equal to or over 38°C
- Feeling feverish
- Chills
- Fatigue or weakness
- Muscle or body aches
- New loss of smell or taste
- Headache
- Gastrointestinal symptoms (abdominal pain, diarrhea, vomiting)
- Feeling very unwell

WORKING TOGETHER TO KEEP US ALL SAFER



Additional Resources

- Best Practices when wearing PPE:
- Donning and Doffing PPE: <https://www.youtube.com/watch?v=adB8RW4I3o4>
- How to wear a fabric mask: https://www.youtube.com/watch?v=9Tv2BVN_WTk
- Hand washing technique: <https://www.youtube.com/watch?v=3PmVJQUCm4E>
- Ontario Guide to Reopening Schools: <https://www.ontario.ca/page/guide-reopening-ontarios-schools>